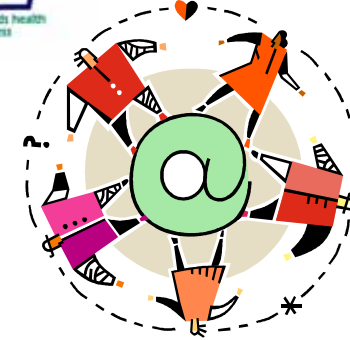


Pennsylvania Recreation & Park Society Presents...



alzheimer's 
association™



Dementia & Communication: Theories, Techniques & Types

9:00 a.m. - 5:00 p.m.

Friday- March 11, 2005

PRPS Office, 2131 Sandy Drive, State College, PA 16803

Thursday - March 17, 2005

Willow Valley Retirement Comm., 675 Willow Valley Square, Lancaster, PA 17602

Friday - April 15, 2005

Erie VA, 135 East 38th Street, Erie, PA 16504

Friday - April 22, 2005

Redstone Highlands, 6 Garden Center Drive, Greensburg, PA 15601

Thursday - May 19, 2005

Seton Manor, 1000 Seton Drive, Orwigsburg, PA 17961

Thursday - May 26, 2005

Dunwoody Village, 3500 West Chester Pike, Newtown Square, PA 19073

*Sponsored by the PA Therapeutic Recreation Society, A Branch of the PA
Recreation & Park Society, and the Alzheimer's Association*

CONTACT PRPS AT (814) 234-4272

Who should attend?

*If you know anyone who may be interested,
please feel free to pass this on!*

- CTRS
- Recreation Directors
- Recreation Staff
- Activity Directors
- Activity Assistants
- Nursing Assistants
- Allied Healthcare professionals
- Volunteers
- Senior Center Director's
- Senior Center Support Staff

For more information on
programs that the PA
Therapeutic Recreation
Society offers, please visit
the website at:

www.ptrs.org



www.ptrs.org

Pennsylvania Recreation & Park Society
2131 Sandy Drive
State College, PA 16803
814-234-4272
www.ptrs.org

Non-profit organization
U.S. Postage
PAID
Permit 99
State College, PA 16801

This workshop will discuss effective communication and a variety of techniques to be used with individuals diagnosed with Alzheimer's disease and related dementia. The presentation will cover the challenges of general day-to-day communication and how it changes throughout the disease process. Verbal and non-verbal techniques will also be discussed. Another aspect of this workshop will include discussions on having families as our allies, effective communication with family members, and helping families communicate with their loved one to have a successful visit.

Participants will:

1. Gain knowledge about effective communication techniques and effective communication techniques for individuals with Alzheimer's and related dementias.
2. Learn effective techniques to communicate with family members, and individuals affected by the disease process.
3. Learn new and creative ideas to assist volunteers and family members as well as other facility staff with successful 1:1 visits.

AGENDA:

8:30 a.m. – 9:00 a.m. Registration
 9:00 a.m. – 12:00 noon Educational Session
 12:00 noon – 1:00 p.m. Lunch on your own
 1:00 p.m. – 4:00 p.m. Educational Session

Meet the Presenters

Erica L. Hood CTRS, and Elaine A. Dively, MSW, LSW are the Education & Outreach Coordinators for the Alzheimer's Association, Greater Pennsylvania Chapter. Erica's in the Central Region and Elaine's in the Southwest Region. Both instructors have developed and implemented educational programs on Alzheimers disease for families and staff throughout Pennsylvania. They will bring a great deal of experience to the session and will share information they have acquired throughout their careers.

Directions

PRPS Office 2131 Sandy Drive, State College, PA 16803
 Contact: Wendy Jo Hartsock (814) 234-4272

Willow Valley Retirement Community
 675 Willow Valley Sq., Lancaster, PA 17602
 Contact: Pam Showers (717) 464-6137

Erie VA 135 E. 38th Street, Erie, PA 16504
 Contact: Natalie Woznick (814) 860-2475

Redstone Highlands 6 Garden Center, Drive, Greensburg, PA 15601
 Contact: Candace Kubinec (724) 832-8400

Seton Manor 1000 Seton Drive, Orwigsburg, PA 17961
 Contact: Donna Hoshauer (570) 366-0400

Dunwoody Village 3500 West Chester Pike, Newtown Square, PA 19073
 Contact: Felicia Adelugba (610) 359-4401

TR-Dementia & Comm. 2005 Registration Form

Name _____
 Title _____
 Agency _____
 Address _____
 City _____ State _____ Zip _____
 Email _____
 Phone (____) _____ Fax (____) _____
 Special Assistance Required _____

- Please send PTRS membership information
 I have read the cancellation policy

Cancellation Policy: Registration fee less a \$5 service charge per person will be refunded if cancellation is made in writing five days prior to the first course date. After the deadline a "Credit Certificate" will be issued upon request redeemable as registration fee toward a future PRPS workshop. No shows will be charged the full rate. In the unlikely event of the cancellation of this workshop, PRPS's liability is limited to 100 percent refund of registration fees and does not include penalty fees on transportation, deposits for hotel accommodations, or other incurred expenses.

Payment

- Dates**
 3/11-State College 3/17 - Lancaster
 4/15 - Erie 4/22 - Greensburg
 5/19 - Orwigsburg 5/26 - Newtown Sq.
- My check is enclosed. *Make checks payable to PRPS*
 Bill my agency at the address listed above or list below.

Registration fees

Member \$69
 Non-member \$89

Bill my credit card
 Visa MC AMEX Discover
 Card # _____
 Exp. date _____
 Cardholder's Signature _____

Total \$ _____

General Information

Course Includes

- √ Handouts
- √ Certificate of Participation
- √ .6 CEU's which are included

Upon arrival at the workshop, participants should first stop by the registration area to receive up-to-date program information as well as a workshop nametag.

Registrants will be notified if the workshop is cancelled or rescheduled. Confirmations are not sent.

The registration deadline is one week before the date of each workshop. *If the workshop has less than 15 participants it may be cancelled or rescheduled. Please register early!*

Return registration form to:
PA Recreation & Park Society ♦2131 Sandy Drive♦ State College,
PA 16803-2283 OR FAX: 814-234-5276